

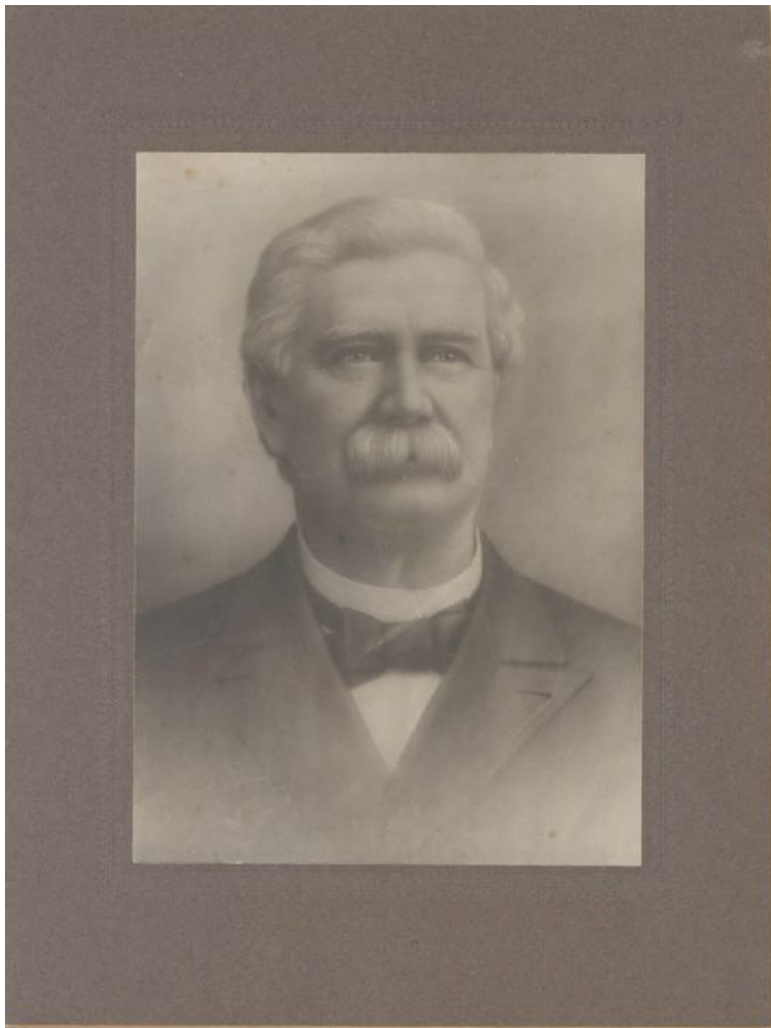
Rutherford College ^[1]

Share it now!



Rutherford College

by Grady L. E. Carroll Sr., 2006



Robert Laban Abernethy. Image courtesy of NC Office of Archives & History.

Rutherford College ^[2], a forerunner of Brevard College ^[3], was established in 1853 by the Reverend Robert Laban Abernethy ^[4] as a private school known as Owl Hollow Schoolhouse in Burke County ^[5]. It was built on 600 acres of forestland given by John Rutherford. In 1858 the school was chartered as Rutherford Seminary; Brantley York ^[6] served as a professor on its faculty in later years. In 1900 the school came under control of the Methodist Church ^[7]. It was a coeducational institution, and one-fourth of the students were admitted tuition-free. Reportedly, more than 4,000 students matriculated at Rutherford College throughout its existence. In the early 1930s, Rutherford College and Weaver College ^[8] merged with Brevard Institute ^[9] at Brevard to become Brevard College ^[3].

References:

George W. Bumgarner and James Elwood Carroll, *The Flowering of Methodism in Western North Carolina* (1984).

Elmer T. Clark, *Methodism in Western North Carolina* (1966).

Additional Resources:

Rutherford College, NC Highway Historical Marker N-29: <https://www.ncdcr.gov/about/history/division-historical-resources/nc-highway-historical-marker-program/Markers.aspx?ct=ddl&sp=search&k=Markers&sv=N-29%20-%20RUTHERFORD%20COLLEGE> [10]

Act to prevent sale of alcohol near Rutherford Seminary: <http://digital.ncdcr.gov/u/?p249901coll22,172984> [11]

Weaver College, NC Highway Historical Marker P-74: <https://www.ncdcr.gov/about/history/division-historical-resources/nc-highway-historical-marker-program/Markers.aspx?ct=ddl&sp=search&k=Markers&sv=P-74%20-%20WEAVER%20COLLEGE> [12]

Laws and resolutions of the State of North Carolina, passed by the General Assembly at its session [1881]: <http://digital.ncdcr.gov/u/?p249901coll22,197851> [13]

Image Credit:

Robert Laban Abernethy. Image courtesy of NC Office of Archives & History. Available from <https://www.ncdcr.gov/about/history/division-historical-resources/nc-highway-historical-marker-program/Markers.aspx?ct=ddl&sp=search&k=Markers&sv=N-29%20-%20RUTHERFORD%20COLLEGE> [10] (accessed November 11, 2012).

Subjects:

[Antebellum \(1820-1861\)](#) [14]

[Education](#) [15]

[Religion](#) [16]

[UNC Press](#) [17]

[Universities and colleges](#) [18]

Authors:

[Carroll, Grady L. E., Sr.](#) [19]

Origin - location:

[Burke County](#) [20]

From:

[Encyclopedia of North Carolina, University of North Carolina Press.](#) [21]

1 January 2006 | Carroll, Grady L. E., Sr.

Source URL: <https://ncpedia.org/rutherford-college>

Links

[1] <https://ncpedia.org/rutherford-college>

[2] <https://www.ncdcr.gov/about/history/division-historical-resources/nc-highway-historical-marker-program/Markers.aspx?ct=ddl&sp=search&k=Markers&sv=N-29-RUTHERFORD%20COLLEGE>

[3] <https://ncpedia.org/brevard-college>

[4] http://www2.brevard.edu/nc_echo/r_college_presidents.htm

[5] <https://ncpedia.org/geography/burke>

[6] <https://ncpedia.org/biography/york-brantley>

[7] <https://ncpedia.org/methodist-church>

[8] <https://ncpedia.org/weaver-college>

[9] <https://archive.org/search.php?query=creator%3A%22Brevard%20Institute%22>

[10] <https://www.ncdcr.gov/about/history/division-historical-resources/nc-highway-historical-marker-program/Markers.aspx?ct=ddl&sp=search&k=Markers&sv=N-29%20-%20RUTHERFORD%20COLLEGE>

[11] <http://digital.ncdcr.gov/u/?p249901coll22,172984>

[12] <https://www.ncdcr.gov/about/history/division-historical-resources/nc-highway-historical-marker-program/Markers.aspx?ct=ddl&sp=search&k=Markers&sv=P-74%20-%20WEAVER%20COLLEGE>

[13] <http://digital.ncdcr.gov/u/?p249901coll22,197851>

[14] <https://ncpedia.org/category/subjects/antebellum-1820-1>

[15] <https://ncpedia.org/category/subjects/education>

[16] <https://ncpedia.org/category/subjects/religion>

[17] <https://ncpedia.org/category/subjects/unc-press>

[18] <https://ncpedia.org/category/subjects/universities-and->

[19] <https://ncpedia.org/category/authors/carroll-grady-l-e->

[20] <https://ncpedia.org/category/origin-location/mountai-17>

[21] <https://ncpedia.org/category/entry-source/encyclopedia->