

## Two aerial photos of Pea Island

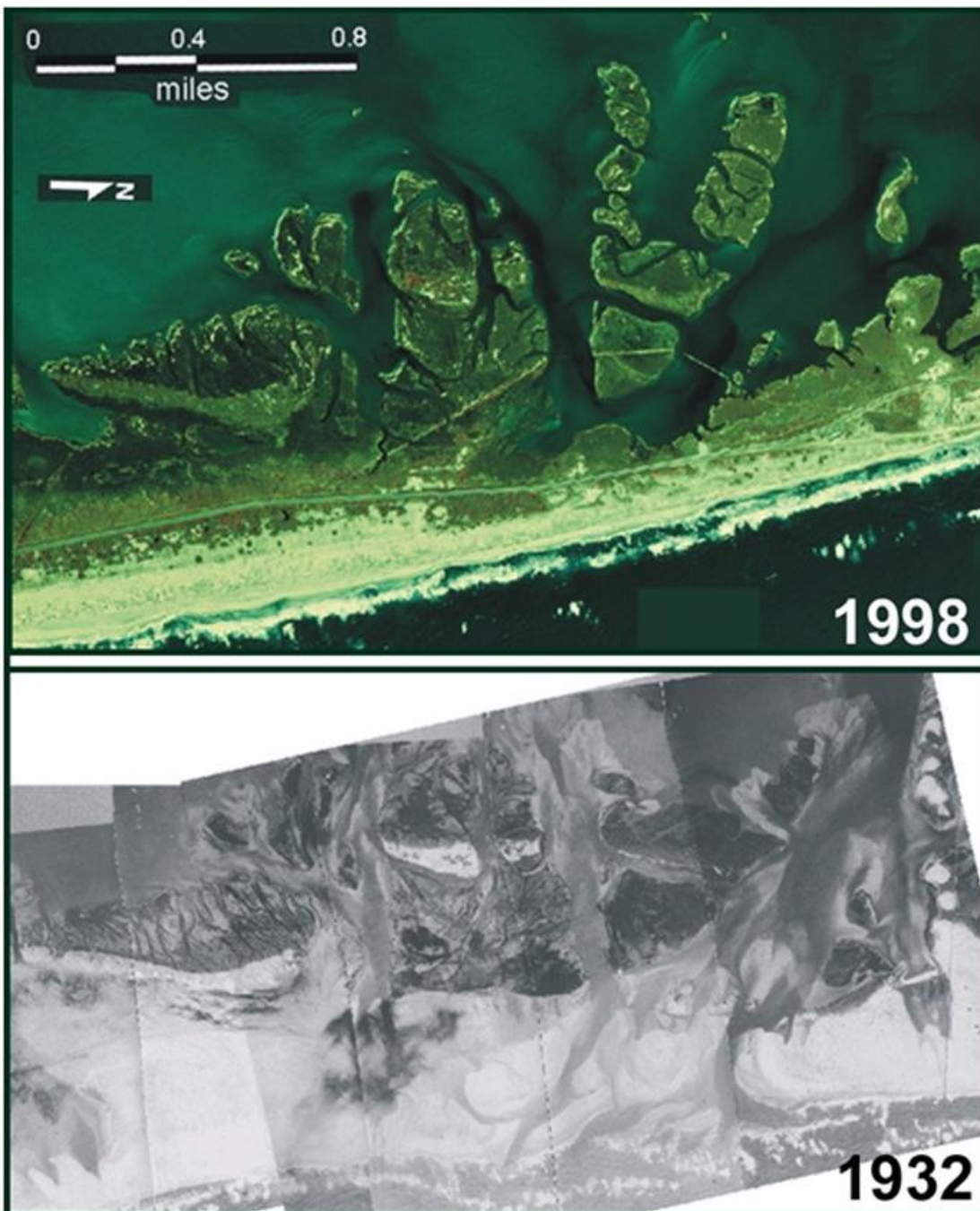
Share it now!



## Two aerial photos of Pea Island

## Two aerial photos of Pea Island

Two aerial photos from 1932 and 1998 of New Inlet on Pea Island. Students view this image to see an example of an inlet that was formed by a storm but later closed naturally.



Usage Statement:

**All Rights Reserved**

"All rights reserved" is a traditional copyright term that indicates that the copyright holder reserves for his/her/their own use

all of the rights given to copyright owners under U.S. copyright law. Items that are included in NCpedia and/or ANCHOR with this rights statement appear by agreement or permission from the rights holder or the institution that holds the item. Click "Available at" to visit the website for the collection where the item appears for more information about the rights or specific uses allowed. For all other non-specified uses, please contact the copyright holder or item owner.

---

**Source URL:** <https://ncpedia.org/media/two-aerial-photos-pea-island>