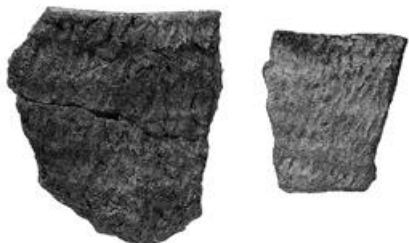


Pottery fragments from Stanly County, North Carolina, 1000-500 BC



Usage Statement:

Creative Commons BY-ND

This item has a Creative Commons license for re-use. The Creative Commons BY-ND license means that you may copy and redistribute (i.e. share) the item for any purpose, even commercially, as long as you give credit to the creator and share the license. This license does not allow for remixing, transforming or building upon the item in any way. For more information about Creative Commons licensing and a link to the license, see full details at <https://creativecommons.org/licenses/by-nd/4.0/> ^[1].

Source URL: <https://ncpedia.org/media/pottery-fragments-stanly>

Links

[1] <https://creativecommons.org/licenses/by-nd/4.0/>