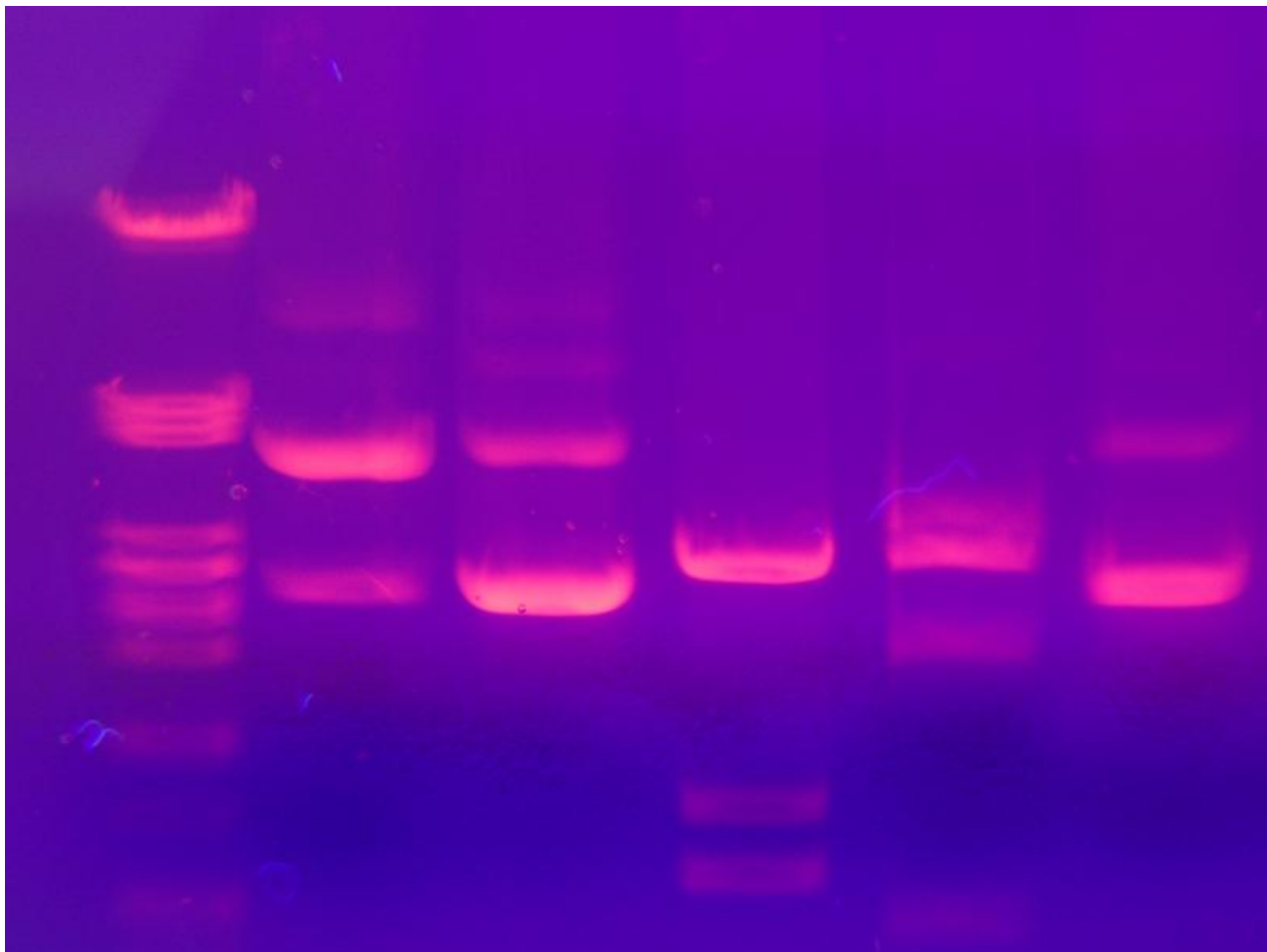


## Gel electrophoresis

### Gel electrophoresis

Gel electrophoresis showing six DNA tracks. In the first row (left), DNA with known fragment sizes was used as a reference. Different bands indicate different fragment sizes (the smaller, the faster it travels, the lower it is in the image); different intensities indicate different concentrations (the brighter, the more DNA). DNA was made visible using ethidium bromide and ultraviolet light.



**Usage Statement:**

### GNU General Public License

You may share exact copies of this work as long as you credit the original author and provide a link to the [license](#) <sup>[1]</sup>. Changing the item is not allowed under this license.

---

**Source URL:** <https://ncpedia.org/media/gel-electrophoresis>

#### Links

[1] <https://www.gnu.org/licenses/gpl-3.0.en.html>