

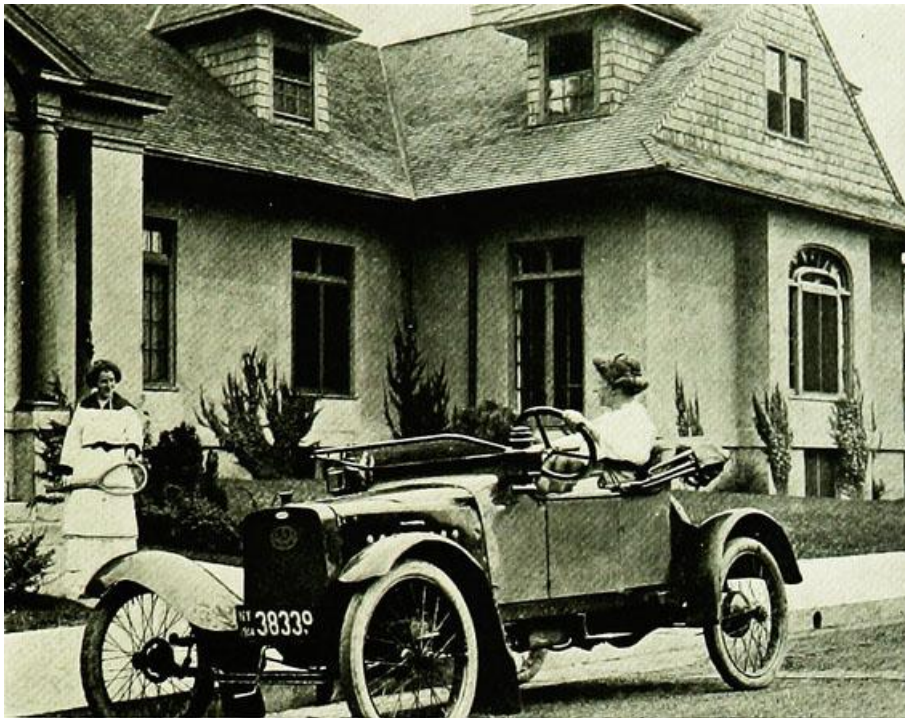
A Car in Front of a Suburban Home, 1915

A Car in Front of a Suburban Home, 1915

Photograph from *Scribner's Magazine* article, "The Woman at the Wheel", by Herbert Ladd Towle, shows a car parked in front of a suburban home. Caption reads "Suburban life is enhanced by the use of small cars which easily connect the home and country club." Towle's article discusses the increase of women drivers, women as car owners, and reasons for women driving.

Towle's Article:

<https://library.brown.edu/cds/repository2/repoman.php?verb=render&id=123...>



Citation (Chicago Style):

[A Car in Front of a Suburban, 1915]. Print. 1915. From "The Woman at the Wheel" *Scribner's Magazine* 57, No 2. New York: 1915. Brown University Library: Digital Repository. <https://library.brown.edu/cds/repository2/repoman.php?verb=render&id=123...> (Accessed October 31, 2018).

Available at:

<https://library.brown.edu/cds/repository2/repoman.php?verb=render&id=123...>

Read the related article:

Primary Source: Women and the Automobile
Turn of the 20th Century Technology and
Transportation

Usage Statement:

Public Domain

Public Domain is a copyright term that is often used when talking about copyright for creative works. Under U.S. copyright law, individual items that are in the public domain are items that are no longer protected by copyright law. This means that you do not need to request permission to re-use, re-publish or even change a copy of the item. Items enter the public domain under U.S. copyright law for a number of reasons: the original copyright may have expired; the item was created by the U.S. Federal Government or other governmental entity that views the things it creates as in the public domain; the work was never protected by copyright for some other reason related to how it was produced (for example, it was a speech that wasn't written down or recorded); or the work doesn't have enough originality to make it eligible for copyright protection.

