

Coastal plain (from NC Atlas Revisited) ^[1]

Coastal Plain

by Dr. John A. Diemer and Dr. Andy R. Bobyarchick

Dept. of Geography and Earth Sciences^[2], University of North Carolina at Charlotte, 2005.

Reprinted with permission from *The North Carolina Atlas Revisited*. Managing editor: Alfred W. Stuart.

Related entries and wildlife

See also:

Our State Geography in a Snap: The Coastal Plain Region^[3]

Extended entry on the Coastal Plain^[4] (from the Encyclopedia of North Carolina)

Related entries: Settlement of the Coastal Plain, 1650-1775^[5]

and Geologic history^[6], Piedmont^[7], Mountains^[8]

Cities or towns in the Coastal Plain with NCpedia profiles: Bath^[9], Fayetteville^[10], Jacksonville^[11], Wilmington^[12]

Wildlife species with NCpedia profiles found in the Coastal Plain include: American shad^[13], Beaver^[14], Black bear^[15], Bluegill^[16], Bobcat^[17], Canada goose^[18], Carolina madtom^[19], Corn snake^[20], Coyote^[21], Crayfish^[22], Eastern box turtle^[23], Fox squirrel^[24], Great horned owl^[25], Largemouth bass^[26], Mallard duck^[27], Mourning dove^[28], Muskrat^[29], Northern bobwhite quail^[30], Raccoon^[31], Southern flying squirrel^[32], Southern leopard frog^[33], Osprey^[34]

Not all species listed are found in all parts of the region. Check the range map in the species profile for more information.

Overview



Mathus, Ryan. 2008. "Currituck Beach Light." Online at Flickr.

^[35]The Coastal Plain forms the eastern edge of North Carolina, making up about 45 percent of the state's total land area. It is bounded on the east by the Atlantic Ocean^[36] and on the west by the Fall Line, a broad zonewhere the soft rocks of the Coastal Plain meet the hard crystalline rocks of the Piedmont^[7]. The Coastal Plain varies in width from 100 to 140 miles. It rises gently in elevation to the west, from about sea level at the coast to as much as 500 feet in the Sand Hills district.

Wetlands^[37] are a dominant feature of the North Carolina Coastal Plain. Wetlands are defined as "...those areas that are inundated or saturated by surface or ground water at a frequency and duration sufficient to support, and that under normal circumstances do support, a prevalence of vegetation typically adapted for life in saturated soil conditions." That is, the descriptive characteristics of wetlands are their hydrology, hydric soils and wetland plants. The fact is, however, that they are creations of topography that causes land areas to drain poorly, whether because of terraces left along ancient shorelines or due to flat lying deposits on flood plains.

Originally North Carolina had about 10.3 million acres of wetlands. As Figure 4 shows, the vast majority of this acreage lies on the Coastal Plain. Wetlands on the Piedmont or in the Mountains^[8] tend to lie along streams whereas those near the coast are products of that region's low elevation. About half of the state's original wetlands have been drained and converted to forestry, agriculture or urban uses. Most of the remaining inventory is in freshwater wetlands. About 240,000 acres originally were in salt marshes and more than 85 percent of that acreage remains undisturbed. Wetlands can provide valuable wildlife and aquatic life habitat, shoreline stabilization, and flood storage. About two-thirds of North

Carolina's rare, threatened and endangered species of plants and animals live in wetlands. Wetlands often provide crucial water quality benefits by trapping sediment, nutrients and toxic pollutants by filtering them from urban or agricultural runoff before they enter streams.

Figure 4. Wetlands

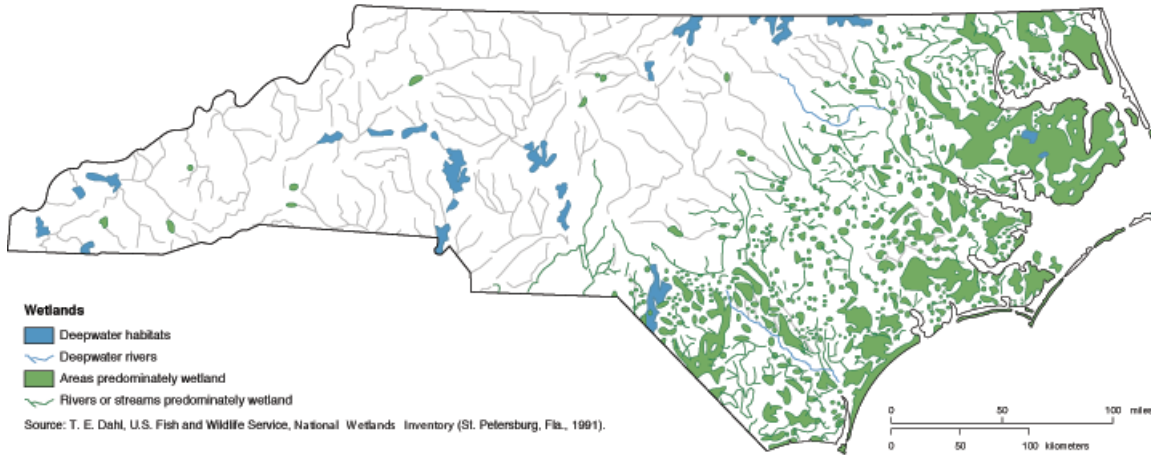


Figure 4 - Wetlands

In June, 1998, a Federal court temporarily lifted controls on wetland draining and conversion. Between then and March, 1999, about 12,000 acres were drained without permits. Since that time about 6,400 of those acres have been restored to their original condition. [The NC Division of Water Quality](#) [38] resumed permitting with stricter application of the legal requirements in March, 1999. Table 1 summarizes the wetlands acreage that was permitted for drainage by the NC Division of Water Quality between 1992 and 2001. The large acreage on the Coastal Plain in 1997 was due largely to development of the Buckhorn Reservoir. The large removal in 1998 was attributable largely to the expansion of the Texas Gulf phosphate mine in Aurora. The sharp drop in acreage beginning in 1999 reflects the more rigorous enforcement by the NC Division of Water Quality.

Year	Mtns	Piedmont	Coastal Plain	Total
1992	16	122	264	402
1993	27	211	393	631
1994	16	244	528	788
1995	15	209	825	1,049
1996	28	206	462	696
1997	9	197	1,500	1,706
1998	6	107	2,704	2,817
1999	13	262	150	425
2000	6	166	281	453
2001	3	97	68	168
TOTAL	139	1,821	7,175	9,135

Source: Final Statewide Wetlands and Stream Management Strategy, NC Division of Water Quality, March, 2002.

The Coastal Plain is sub-divided into two major sub-areas. The Outer Coastal Plain, or Tidewater, lies closest to the ocean, is extremely flat, averages less than 20 feet above sea level and contains large swamps and lakes indicative of poor drainage conditions. Eleven of the 12 counties that have 55 percent or more of their areas in wetland soil areas are in the Tidewater section. Streams on the Outer Coastal Plain are brackish and subject to tidal fluctuations in level.

The Inner Coastal Plain is higher in elevation and better drained. Locally, however, there are distinctive wetlands or upland bogs known as [Pocosins](#) [39]. There are also the [Carolina Bays](#) [40], elliptical lakes of unknown origin. Many pocosins originated as Carolina Bays which have since filled with vegetation and sediment.

The Fall Line marks the boundary between the Coastal Plain and the Piedmont. Rivers that rise in the Blue Ridge Mountains flow across the Piedmont and enter the Coastal Plain at the Fall Line. This boundary is characterized by steep river gradients and rapids. Downstream of the Fall Line, the rivers flow to the southeast and have carved broad, low valleys in the soft, easily eroded sediments of the Coastal Plain. There the rivers have gentle gradients and are flanked by swamps and marshes. They are generally navigable all the way up to the Fall Line, an important factor in the early settlement of the region from the coast. A distinctive feature along the Fall Line is the Sand Hills (Figure 1). These deposits originally formed as wind-blown sand dunes. They are permeable, quartz-rich deposits that produce well-drained, acidic soils that are deficient in plant nutrients.

Figure 5. Major Coastline Features of the Outer Banks



Source: J. W. Clay, D. M. Orr Jr., and A. W. Stuart, eds., *North Carolina Atlas: Portrait of a Changing Southern State* (Chapel Hill: University of North Carolina Press, 1975).

Figure 5 - Major coastline features of the Outer Banks The coastal margin north of Cape Lookout is a “drowned coast,” in which the sea level rise associated with the end of the last Ice Age and the continual melting of the ice caps has caused the ocean to invade the lower reaches of river valleys. This drowning has produced large embayments such as Albemarle and Pamlico Sounds [41]. Associated with these embayments is a string of barrier islands that are separated from the mainland by as much as 20 miles, the Outer Banks (Figure 5). These linear islands apparently were formed as sea level rose over old beach ridges and sand dunes. Continued rises in sea level, accompanied by wave and wind action, cause these islands and their lagoons to slowly move inland. This steady inland migration, known as barrier island rollover, plus the exposure to hurricanes and other storms, makes the many developments along these attractive shores highly vulnerable to damage and destruction. The most famous example of this is the historic Cape Hatteras lighthouse [42]. This lighthouse has been moved farther inland to protect it from erosion.

The lagoons and sea marshes along the coast near the Outer Banks are vital parts of the coastal ecosystem. The shallow shoals and sand bars that are associated with barrier islands are constantly shifting in location. They have presented sailors with very hazardous waters in which to navigate and this stretch of the Atlantic coast is so littered with shipwrecks that it is known as “The Graveyard of the Atlantic” [43]. These dangerous waters also made it difficult for early explorers and settlers to land on the northeast coast of North Carolina.

South of Cape Lookout is the Cape Fear Uplift, where the coast was gently folded upwards. Instead of drowning the river valleys, the uplift exposed an even coastline, along which have formed long stretches of broad beaches. The deep embayments found to the north are not present, nor are extensive barrier islands. Historically, this length of coast was somewhat more accessible, despite the Frying Pan Shoals that make the mouth of the Cape Fear River [44], the entrance to the port of Wilmington, dangerous and which requires dredging to maintain a navigable channel. Today this region is known for its miles of wide, sandy beaches that extend southward through the Grand Strand of South Carolina.

Image sources:

Mathus, Ryan. 2008. "Currituck Beach Light." Online at Flickr at <https://www.flickr.com> [35]. Accessed 2/2011.

Dahl, T. E. 1991. "National wetlands inventory." Reprinted in *The North Carolina Atlas Revisited*.

N. C. Division of Water Quality. 2002. "Final statewide wetlands and steam management strategy." Reprinted in *The North Carolina Atlas Revisited*.

Clay, J. W., D. M. Orr Jr., and A. W. Stuart, eds. 1975. *North Carolina Atlas: Portrait of a Changing Southern State* Reprinted in *The North Carolina Atlas Revisited*.

References and additional resources:

Orr, Douglas Milton, and Alfred W. Stuart. 2000. *The North Carolina atlas: portrait for a new century* [45]. Chapel Hill: University of North Carolina Press.

Powell, William Stevens, and Michael R. Hill. 2010. *The North Carolina gazetteer: a dictionary of Tar Heel places and their*

history ^[46]. Chapel Hill: University of North Carolina Press.

Stuart, Alfred W. *The North Carolina Atlas Revisited*. 2005.

Subjects:

Geography ^[47]

Regions ^[48]

Authors:

Bobyarchick, Andy R. ^[49]

Diemer, John A. ^[50]

Origin - location:

Coastal Plain ^[51]

From:

North Carolina Atlas Revisited. ^[52]

1 August 2005 | Bobyarchick, Andy R.; Diemer, John A.

Source URL: <https://ncpedia.org/geography/region/coastal-plain/ncatlasrevisited>

Links

[1] <https://ncpedia.org/geography/region/coastal-plain/ncatlasrevisited> [2] <https://geoearth.charlotte.edu/> [3] <https://ncpedia.org/geography/region/coastal-plain> [4] <https://ncpedia.org/geography-part-2-cradle-north> [5] <https://ncpedia.org/history/colonial/coastal-plain> [6] <https://ncpedia.org/geologic-history-nc-atlas-revisited> [7] <https://ncpedia.org/geography/region/piedmont> [8] <https://ncpedia.org/our-state-geography-snap-mountain> [9] <https://ncpedia.org/geography/bath> [10] <https://ncpedia.org/fayetteville-0> [11] <https://ncpedia.org/jacksonville> [12] <https://ncpedia.org/geography/wilmington> [13] <https://ncpedia.org/american-shad-nc-wins> [14] <https://ncpedia.org/beaver-nc-wins> [15] <https://ncpedia.org/black-bear-nc-wins> [16] <https://ncpedia.org/bluegill-nc-wins> [17] <https://ncpedia.org/bobcat-nc-wins> [18] <https://ncpedia.org/canada-goose-nc-wins> [19] <https://ncpedia.org/carolina-madtom-nc-wins> [20] <https://ncpedia.org/corn-snake-nc-wins> [21] <https://ncpedia.org/coyote-nc-wins> [22] <https://ncpedia.org/crayfish-nc-wins> [23] <https://ncpedia.org/eastern-box-turtle-nc-wins> [24] <https://ncpedia.org/fox-squirrel-nc-wins> [25] <https://ncpedia.org/wildlife/great-horned-owl> [26] <https://ncpedia.org/largemouth-bass-nc-wins> [27] <https://ncpedia.org/mallard-duck-nc-wins> [28] <https://ncpedia.org/mourning-dove-nc-wins> [29] <https://ncpedia.org/muskrat-nc-wins> [30] <https://ncpedia.org/northern-bobwhite-quail-nc-wins> [31] <https://ncpedia.org/wildlife/raccoon> [32] <https://ncpedia.org/southern-flying-squirrel-nc-wins> [33] <https://ncpedia.org/southern-leopard-frog-nc-wins> [34] <https://ncpedia.org/wildlife/osprey> [35] <https://www.flickr.com> [36] <https://www.cia.gov/the-world-factbook/oceans/atlantic-ocean/> [37] <https://www.ncpedia.org/wetlands> [38] <https://www.deq.nc.gov/> [39] <https://www.ncpedia.org/pocosins> [40] <https://ncpedia.org/carolina-bays> [41] <https://www.ncpedia.org/sounds> [42] <https://ncpedia.org/cape-hatteras-lighthouse> [43] <https://ncpedia.org/graveyard-atlantic> [44] <https://ncpedia.org/rivers/cape-fear> [45] <https://search.worldcat.org/title/43894925> [46] <https://search.worldcat.org/title/441211592> [47] <https://ncpedia.org/category/subjects/geography> [48] <https://ncpedia.org/category/subjects/regions> [49] <https://ncpedia.org/category/authors/bobyarchick-andy-r> [50] <https://ncpedia.org/category/authors/diemer-john> [51] <https://ncpedia.org/category/origin-location/coastal-pl> [52] <https://ncpedia.org/category/entry-source/north-carolin>