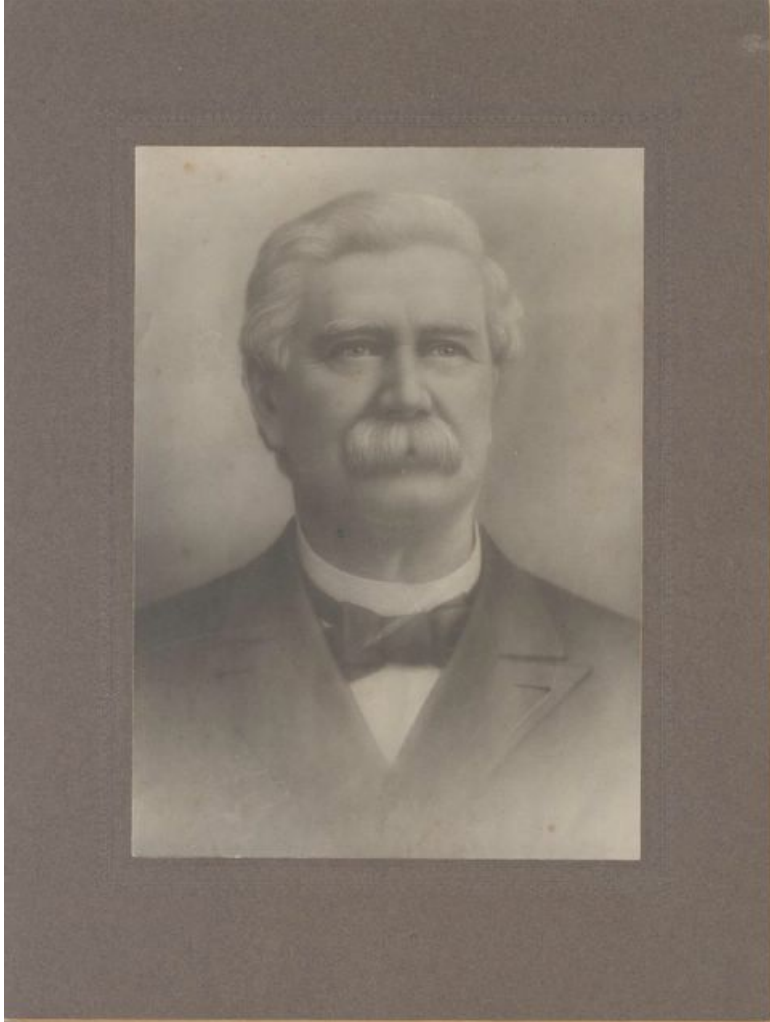


## **Rutherford College** <sup>[1]</sup>

### **Rutherford College**

by Grady L. E. Carroll Sr., 2006



Robert Laban Abernethy. Image courtesy of NC Office of Archives & History.

**Rutherford College** <sup>[2]</sup>, a forerunner of **Brevard College** <sup>[3]</sup>, was established in 1853 by the Reverend **Robert Laban Abernethy** <sup>[4]</sup> as a private school known as Owl Hollow Schoolhouse in **Burke County** <sup>[5]</sup>. It was built on 600 acres of forestland given by John Rutherford. In 1858 the school was chartered as Rutherford Seminary; **Brantley York** <sup>[6]</sup> served as a professor on its faculty in later years. In 1900 the school came under control of the **Methodist Church** <sup>[7]</sup>. It was a coeducational institution, and one-fourth of the students were admitted tuition-free. Reportedly, more than 4,000 students matriculated at Rutherford College throughout its existence. In the early 1930s, Rutherford College and **Weaver College** <sup>[8]</sup> merged with **Brevard Institute** <sup>[9]</sup> at Brevard to become **Brevard College** <sup>[3]</sup>.

#### **References:**

George W. Bumgarner and James Elwood Carroll, *The Flowering of Methodism in Western North Carolina* (1984).

Elmer T. Clark, *Methodism in Western North Carolina* (1966).

#### **Additional Resources:**

Rutherford College, NC Highway Historical Marker N-29: <https://www.ncdcr.gov/about/history/division-historical-resources/nc-highway-historical-marker-program/Markers.aspx?ct=ddl&sp=search&k=Markers&sv=N-29%20-%20RUTHERFORD%20COLLEGE> <sup>[10]</sup>

Act to prevent sale of alcohol near Rutherford Seminary: <https://digital.ncdcr.gov/Documents/Detail/private-laws-of-the-state-of-north-carolina-passed-by-the-general-assembly-1868-1869/1952675?item=2042257> <sup>[11]</sup>

Weaver College, NC Highway Historical Marker P-74: <https://www.ncdcr.gov/about/history/division-historical-resources/nc-highway-historical-marker-program/Markers.aspx?ct=ddl&sp=search&k=Markers&sv=P-74%20-%20WEAVER%20COLLEGE> [12]

Laws and resolutions of the State of North Carolina, passed by the General Assembly at its session [1881]: <https://digital.ncdcr.gov/Documents/Detail/laws-and-resolutions-of-the-state-of-north-carolina-passed-by-the-general-assembly-at-its-session-1881/3889515?item=3893991> [13]

Rutherford College yearbooks: <https://lib.digitalnc.org/search?In=en&p=691:%22Rutherford+College%22%20AND%20655:%22Yearbooks%22&sf=year&so=a> [14]

#### Image Credit:

Robert Laban Abernethy. Image courtesy of NC Office of Archives & History. Available from <https://www.ncdcr.gov/about/history/division-historical-resources/nc-highway-historical-marker-program/Markers.aspx?ct=ddl&sp=search&k=Markers&sv=N-29%20-%20RUTHERFORD%20COLLEGE> [10] (accessed November 11, 2012).

#### Subjects:

[Antebellum \(1820-1861\)](#) [15]

[Education](#) [16]

[Religion](#) [17]

[Universities and colleges](#) [18]

#### Authors:

[Carroll, Grady L. E., Sr.](#) [19]

#### Origin - location:

[Burke County](#) [20]

#### From:

[Encyclopedia of North Carolina, University of North Carolina Press.](#) [21]

1 January 2006 | Carroll, Grady L. E., Sr.

---

**Source URL:** <https://ncpedia.org/rutherford-college>

#### Links

[1] <https://ncpedia.org/rutherford-college> [2] <https://www.ncdcr.gov/about/history/division-historical-resources/nc-highway-historical-marker-program/Markers.aspx?ct=ddl&sp=search&k=Markers&sv=N-29-RUTHERFORD COLLEGE> [3] <https://ncpedia.org/brevard-college> [4] [http://www2.brevard.edu/nc\\_echo/r\\_college\\_presidents.htm](http://www2.brevard.edu/nc_echo/r_college_presidents.htm) [5] <https://ncpedia.org/geography/burke> [6] <https://ncpedia.org/biography/york-brantley> [7] <https://ncpedia.org/methodist-church> [8] <https://ncpedia.org/weaver-college> [9] <https://archive.org/search.php?query=creator%3A%22Brevard%20Institute%22> [10] <https://www.ncdcr.gov/about/history/division-historical-resources/nc-highway-historical-marker-program/Markers.aspx?ct=ddl&sp=search&k=Markers&sv=N-29%20-%20RUTHERFORD%20COLLEGE> [11] <https://digital.ncdcr.gov/Documents/Detail/private-laws-of-the-state-of-north-carolina-passed-by-the-general-assembly-1868-1869/1952675?item=2042257> [12] <https://www.ncdcr.gov/about/history/division-historical-resources/nc-highway-historical-marker-program/Markers.aspx?ct=ddl&sp=search&k=Markers&sv=P-74%20-%20WEAVER%20COLLEGE> [13] <https://digital.ncdcr.gov/Documents/Detail/laws-and-resolutions-of-the-state-of-north-carolina-passed-by-the-general-assembly-at-its-session-1881/3889515?item=3893991> [14] <https://lib.digitalnc.org/search?In=en&p=691:%22Rutherford+College%22%20AND%20655:%22Yearbooks%22&sf=year&so=a> [15] <https://ncpedia.org/category/subjects/antebellum-1820-1> [16] <https://ncpedia.org/category/subjects/education> [17] <https://ncpedia.org/category/subjects/religion> [18] <https://ncpedia.org/category/subjects/universities-and-> [19] <https://ncpedia.org/category/authors/carroll-grady-l-e> [20] <https://ncpedia.org/category/origin-location/mountain-17> [21] <https://ncpedia.org/category/entry-source/encyclopedia->